

# CLOSING THE GAP

Of Health in New Hampshire

## How It Affects You

### There is a problem

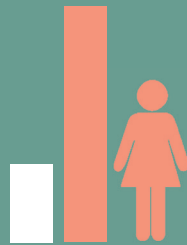
Not everyone in New Hampshire has the same opportunity for good health. This creates a "health gap." People have different health outcomes, creating a missed opportunity in one of the healthiest states in the country.

### The Problem Affects Everyone

Health disparities are a shared problem. They impact everyone through our quality of life and the cost of private and public services.



**We Can  
Work  
Together  
To Solve It**



Minority women in NH are three times more likely to have cardiovascular disease compared with white women.



Minority men in NH are almost twice as likely as white men to have diabetes.

*Health and Equity in New Hampshire: 2013 Report Card*



30 percent of US direct medical costs for Blacks, Hispanics, and Asian Americans were avoidable due to health inequities.



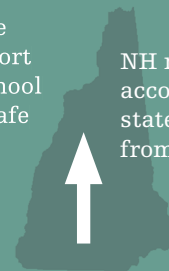
The US economy loses an estimated \$309 billion per year due to the direct and indirect costs of such disparities.

*Focus on Health Care Disparities*

*Kaiser Family Foundation publication #8396, December 2012*

Minority youth in New Hampshire **3X** are more likely to report being absent from school because they felt unsafe on the way or at school.

*Health and Equity in New Hampshire: 2013 Report Card*



NH minorities accounted for 50% of the state's population gain from 2000 to 2010.

*NH Demographics Report from Carsey Institute*

**78%** of people in the United States agree it is important to make sure health differences between groups of people in this country no longer exist because of factors such as income and education.

*Achieving Health Equity in the United States, 2010*

**Good health does not begin with a visit to the doctor's office, but instead starts in our homes, schools and communities. A healthier New Hampshire means shared successes and a stronger economy.**

*Adapted from the Health and Equity in New Hampshire: 2013 Report Card*

## Help Close The Gap

Get involved through the NH Health and Equity Partnership at

[www.equitynh.org](http://www.equitynh.org)

Or contact Rebecca Sky at  
[rsky@healthynh.com](mailto:rsky@healthynh.com)  
(603) 415-4277